

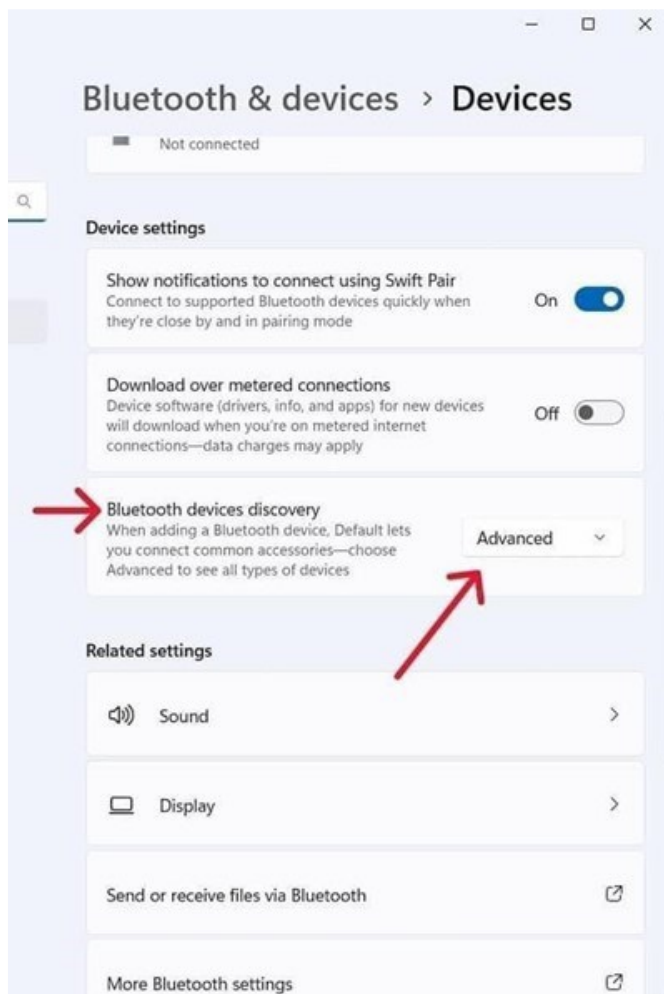
Technical Note 33

Bluetooth setting in Windows 11

This information is valid for all JETI spectroradiometers of the spectraval and specbos series which are to be connected to a Windows 11 computer via Bluetooth.

Please change the Bluetooth setting in Windows 11 so that the devices can be found.

You have to select “Advanced” under “Bluetooth devices discovery” in the Bluetooth settings. See also the following image:



Last modified: November 2024